



20
YEARS
EST. 2006

AIRVISION

by Tabula



“

AirVision delivers. It's made things faster, clearer and safer. It's essential to our operations.

GUY STEVENSON | COO, Agflite Aerial Agriculture



Aerial ag operations have never been so easy

AirVision is Tabula's complete aerial ag operations solution, with GPS guidance, job management, integrated aerial and ground fleet tracking, and proof of application rolled into one.

Developed with ag pilots and industry leaders across the globe, it's built for pilot safety, operational efficiency, and seamless information flow across your team.

With quality hardware, smart software, regional support, and accessible training resources, AirVision gives you everything you need to run safer, more coordinated operations.

PILOT

Registration: ZKJJD
Aircraft type: A20N
Last seen: less than a minute ago
Altitude: 10250 ft
Speed: 550 km/h

OPS SUPERVISOR

Working vs Moving

Type	Total #	Active #
Helicopter	3	3

3 of 3 available

Total Distance Worked: 2,664 km (+48%)

Total Working Hours: 45 hours (+47%)

Total Moving Hours: 212 hours (+49%)

OFFICE/DISPATCH

In-cockpit visual display

Live operations updates

Visual tracking and comms

Safety

Keeping operators safe starts with keeping things simple. Know you've got all the right tools in place, with support if something goes sideways.

“

WOW! A game changer for managing our data and ops management going forward. And the safety benefits long term are immeasurable.

STEPHEN HOLDING | General Manager, Field Air



Features

Real-time tracking of ground and air assets

Safety notifications via lightbars

Automatic on/off switches for spray control

Pre-job perimeter checking

Ops normal confirmation button **NEW**

AirVision SOS for incident response

Planefinder ADS-B layer to view surrounding aircraft in near real-time **NEW**

Benefits

Manage your fleet in real time

Quickly identify and share hazards across your fleet

Put operator safety first

Reduce pilot interruptions

Provide instant support when it matters most

Comprehensive situational awareness

Efficiency

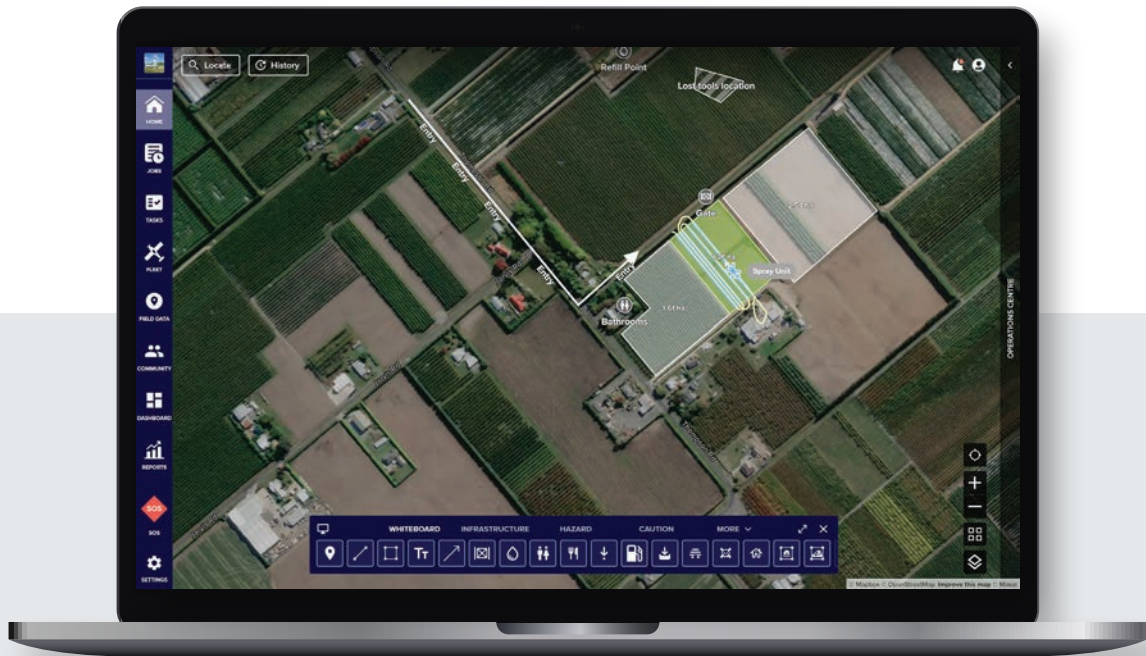
Coordinate ground and air fleet, reduce time and product waste. Get your team to the job fully prepared, and keep the job admin to a minimum. No paperwork or guesswork needed.

“

Seeing everything in one place saves so much time and work, everyone knows where they're going and what they're doing.

HAYDEN CHERRY

Co-owner, Southland Helicopters Limited



Features

Spray, exclusion and no-go zones mapping

Assign individual jobs to pilots across single or multiple aircraft

Assign jobs to multiple aircraft

Real-time communication between office and field with Whiteboard **NEW**

Automated upcoming spray notifications to neighbours

Fleet, activity and productivity summaries

Integration with invoicing and reporting systems

Benefits

Efficient job planning and application

Instant visibility of operational or workflow changes

Update job information mid-flight to avoid delays

Streamline resources and minimise product waste

Save time, reduce manual input and paperwork

Accuracy

Do it once and do it right. AirVision gives you the tools to ensure precise coverage, avoid no-go zones, and work with confidence - delivering peace of mind every time.

“

The technology gives us peace of mind that all our pilots are utilising a tool which provides added safety to their task as well as the best tool for precision application and a perfect job every time.

HUGH ACTON-ADAMS
Director/Chief Pilot, Rotor Solutions



Features

Satellite GPS navigation

Proof of placement reporting

Live fleet tracking

Drift offset management

Laser altimeter

Benefits

Deliver accurate coverage every time

Avoid costly errors and product waste

Guide operators with clarity

Maintain accurate traceable records

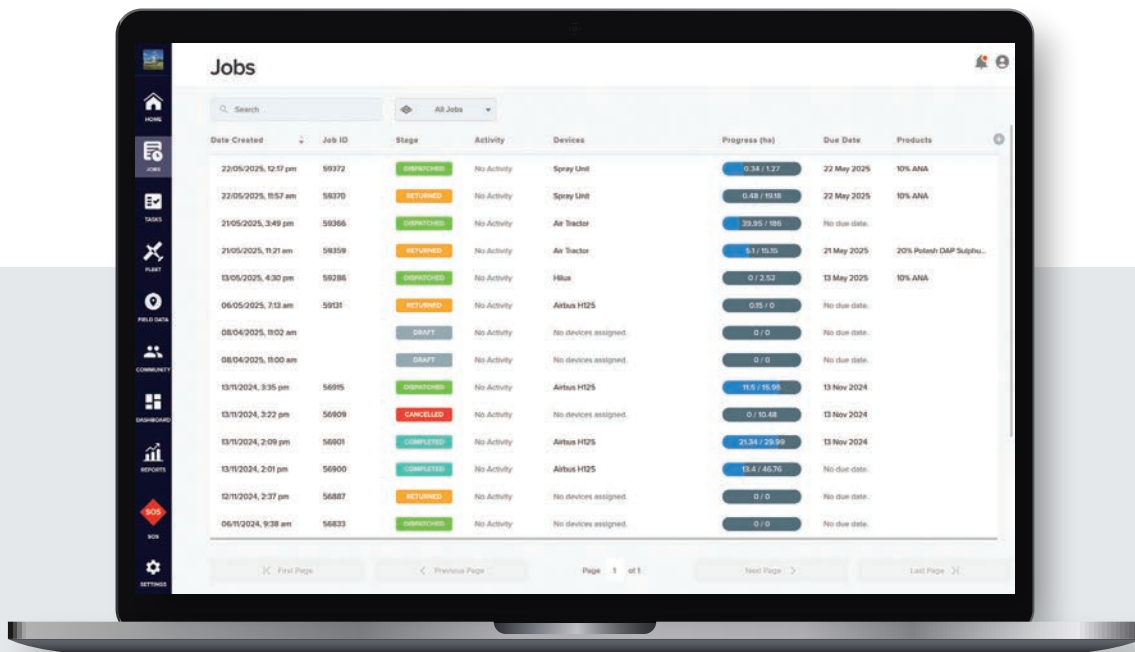
Insight

Turn raw data into real understanding. Get the information you need to make faster decisions and work smarter.

“

Being able to track our entire fleet in near real time means we know exactly where every aircraft is up to in a job at any point. Combined with tracking ground vehicles all on the same screen is brilliant. It's a system we can't do without.

AIRCAIR AVIATION



Features

Real-time data transfer between aircraft, ground crew, and office

Whiteboard for live updates and situational awareness **NEW**

Application data recorded for compliance and audit trails

Integration with invoicing and reporting systems

Field data capture for tracking best practice and resolving complaints **NEW**

Benefits

Understand what's happening across your entire workflow

Make faster, more informed decisions

Automate proof of application

Simplify compliance and reporting

Access complete job records anytime with History Mode

Support

Stay up and running with the right information, inventory and access to help when you need it.

“

We would be lost without Tabula. It keeps the work moving.

DAMIEN LINDSAY

Operations Manager, McDermott Aviation



Features

Personalised onboarding programme

Responsive local and global customer support (NZ, AU, US)

Customer only online community

Continuous product development

Regular software updates

Benefits

Dedicated support to reduce downtime and keep operations running smoothly

No costly infrastructure changes

Shared innovation to improve safety, efficiency and accuracy

Backed by experts who understand your industry

Integrations

AirVision integrates with a range of solutions to simplify operations.



The AirVision Tablet

Available in the following options:

- 10" or 8" model
- Full depth or slimline split system (battery and console separated for separate locations in the cockpit)

[Talk to our team for further specifications.](#)



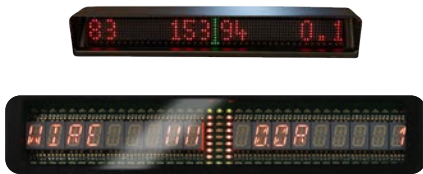
Additional capabilities:

- Operate 2 x KZs
- Auto on/off prescription
- Split boom capability
- Powerline/hazard background
- AVT/FVT in same unit
- Cache maps
- Sat comms
- SOS function
- Perimeter checks
- G check
- Trotter and AFDAU integrations



Additional Hardware

Contact our team for more details on hardware specifications.



Lightbar

Your can choose between an external or internal lightbar – with customisable display to include hazard warnings, a broad brightness range and flexible mounting options.

Spray controller

The Spray controller combines navigation and application control in one intuitive package for spray application. Calibrate, adjust and operate, all on one screen.



Ag laser altimeter

The laser altimeter ensures accurate product application at the right height, with real-time feedback on both the lightbar and AirVision tablet to keep you on target throughout the job.

G70 tracker

For additional vehicles in the fleet, including side-by-sides – showing vehicle location, status, speed, direction, and travel activity in real time.

Tabula at a Glance

6.7M acres per month



Operating across **16** countries globally

Founded in **2006**

60 Staff across the globe



2B

data points recorded annually

60K

jobs processed every month



Circling the globe with product application



1.7 times per day

Offices across **New Zealand**

United States

United Kingdom

Australia

Chile

5

sectors of operation



Horticulture



Agriculture



Ag Aviation



Wildfire Management



Pest Management

Summary

Tabula connects landowners and contractors with the tools to plan, coordinate, track and record operational work, whether in the air, on the ground, or on foot. Trusted across agriculture, horticulture, viticulture, vector control, and firefighting, our solutions support everything from spraying and spreading to pest control and fieldwork.

With job management, fleet visibility, and real-time communication in one connected system, Tabula keeps your team informed and in sync. With data linked to the property for compliance and reporting, and a wide network of integration partners, we help you run complex operations with less effort.

Built in the field, trusted across industries, and backed by a team who knows the work.



North America

US Office

201 E. New Haven Ave,
Melbourne, FL 32901,
USA

Sales Team

+1 (321) 265 7060
usa.sales@tabula.live

New Zealand

0800 482 285
nz.sales@tabula.live

Australia

1800 482 285
au.sales@tabula.live

United Kingdom

+44 800 031 8818
uk.sales@tabula.live

Chile

+56 800 231 284
cl.sales@tabula.live

Stay in touch

www.tabula.live



Tabula
Know for sure.